

# FIRE SAFETY GAS SHUT-OFF VALVE

Model 110-G

The Model 110-G Fire Safety Gas Shut-off Valve is used in gas piping systems to provide automatic shut-off of gas flow in the event of a fire. Valve operation is fully mechanical and independent of the electrical power supply. The emergency gas line shut-off is mandated by many codes.

The assembly consists of an aluminum bodied valve rated to 50 PSI with aluminum bonnet, zinc plated brass adapter and 303 stainless steel stem. Standard installation kit includes 25' coil of wire and two (2) 165° F fusible links. Additional links and longer wire are available upon request. Maximum pressure differential is 5 PSI.

## Application

The Model 110-G may be used in any gas flow application by locating the valve in a horizontal pipe run where the gas supply enters the building. Install the trip wire with the fusible link located in the area to be monitored for excessive temperature.

## Operation

The valve is held open by a stretched wire containing a fusible link. When the temperature rises above 165° F, the link will melt and the tension of the internal spring closes the valve.

## Testing

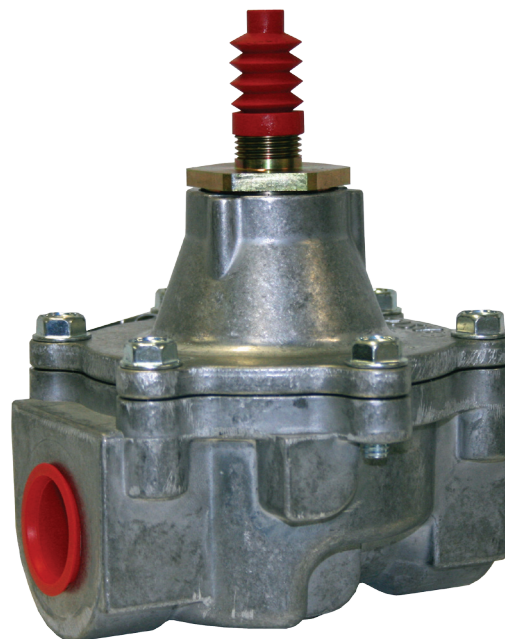
As with any piece of safety equipment, the gas shut-off valve should be tested upon completion of installation and regularly thereafter to ensure that the valve will close in the event of excessive temperature at the fusible link. Ideally, the link would be heated with a small flame until the link melts. The valve should snap closed immediately. If the valves not close properly, the wire should be checked for freedom of movement, and the mechanism of the valve should be checked for free operation.

## Suggested Specifications

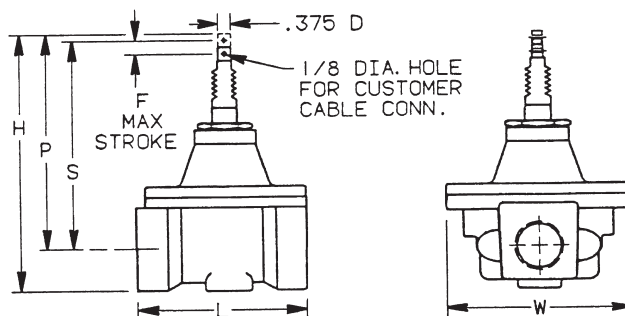
Provide and install, where shown in the gas supply line, a quick-closing, spring-loaded, fire safety gas shut-off valve held open by a wire with a 165° F fusible link arranged so that the valve will automatically close if the link melts. The fire safety gas shut-off valve shall be a Preferred Utilities Mfg. Corp., Danbury, CT Model 110-G

## Specifications

**Valve Body & Bonnet:** Aluminum  
**Adapter:** Zinc plated brass  
**Stem:** 303 stainless steel  
**Safe Working Pressure:** 50 PSI  
**Max Pressure Differential:** 5 PSI



Model 110-G, Fire Safety Gas Shut-Off Valve



## Ordering Information

Select Catalog Number from the table.  
 Includes 25' cable & two (2) fusible links

Catalog Number	NPT	F	H	L	P	S	W	CV
011745	1/2	3/16	4 3/8	2 3/4	3 13/16	3 9/16	7 61/64	5.2
011746	3/4	3/16	4 13/16	3 5/16	4	3 3/4	2 23/64	6.5
011747	1	17/32	7 5/32	5	5 27/32	5 19/32	2 11/32	23
011748	1 1/4	17/32	7 5/32	5	5 27/32	5 19/32	5 3/8	34
011749	1 1/2	17/32	7 5/32	5	5 51/64	5 21/32	5 3/8	38
011750	2	39/64	7 3/4	6 3/32	6 1/4	6	5 3/8	54
011751	2 1/2	29/32	9 61/64	7 51/64	7 5/8	7 3/8	6 5/16	110
011752	3	29/32	9 61/64	7 25/32	7 5/8	3 9/16	7 61/64	138
13088	Extra Cable/Link Kit							1
13084	Extra Link							.5

Specifications subject to change without notice.