



# Preferred Utilities Manufacturing Corporation

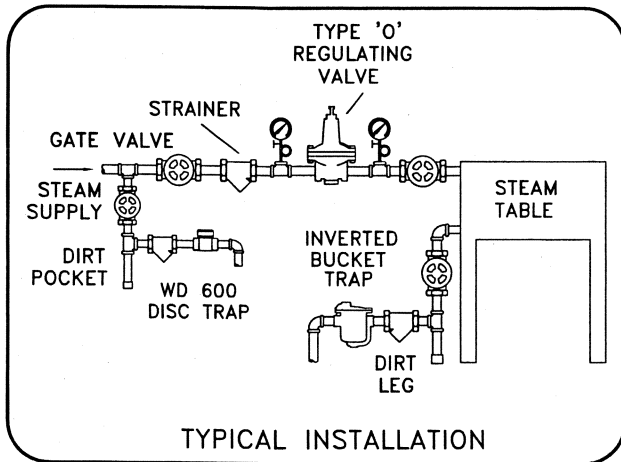
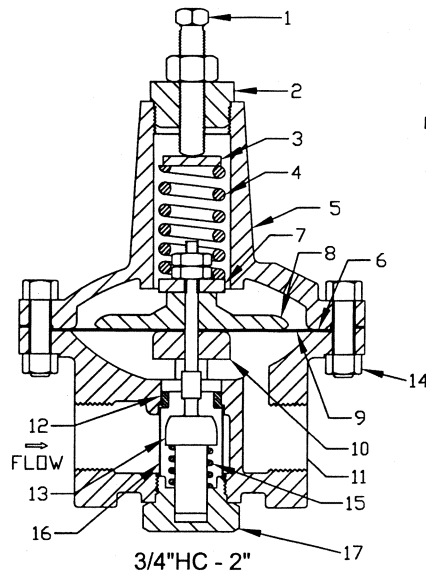
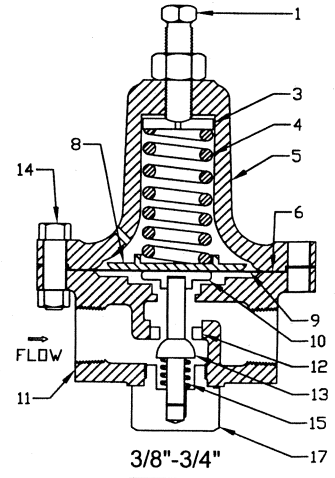
# TYPE 'O' PRESSURE REGULATOR INSTALLATION & MAINTENANCE INSTRUCTIONS

INSTRUCTION PART NO. 2220700

REVISION 1

## INSTALLATION

1. Blow down line thoroughly.
2. Install strainer ahead of valve.
3. Install steam trap ahead of valve.
4. Install regulator in horizontal pipe only. **WARNING:** Vertically installed unit can be erratic and prematurely wear.
5. Loosen lock nut, then loosen adjusting screw enough to release all tension on the Regulator Valve adjusting spring.
6. Turn on pressure slowly. Then turn down adjusting screw enough to open valve slightly. Operate in this manner for several minutes.
7. Turn down adjusting screw slowly at intervals until desired pressure is obtained. Tighten lock nut.



## MAINTENANCE

Unsatisfactory regulation is usually due to dirt, pipe compound, etc., blocking the internal strainer or gumming the internal mechanism. To clean strainer, first make sure pressure has been relieved from system. Unscrew bottom and remove strainer screen. Clean the lower part of the valve. This can be accomplished without removing the valve from the line or unbolting the cover. If cleaning the strainer does not correct operation, remove valve from line and disassemble parts. After cleaning parts the disc and seat should be lapped together using fine lapping compound. Avoid excessive lapping as this cuts ridges and makes tight seating impossible. Reassemble valve.

## PARTS LIST

- |       |   |
|-------|---|
| 1     | Adjusting Screw (includes Lock Nut)             |
| 2     | Adjusting Spring Cap                            |
| 3     | Spring Washer                                   |
| 4     | Adjusting Spring (state range)                  |
| 5     | Cover   |
| 6*    | Cover Gasket                                    |
| 7     | Upper Spring Guide                              |
| 8*    | Upper Diaphragm Block                           |
| 9*    | Diaphragm (bronze, 2 sheets)                    |
| 9a*   | Diaphragm (composition, for water, oil or air)  |
| 10    | Lower Diaphragm Plate                           |
| 11-12 | Body Ass'y (includes Seat Insert)               |
| 13    | Disc (includes Lock Nuts)                       |
| 14*   | Cover Bolts & Nuts, each                        |
| 15*   | Main Spring                                     |
| 16*   | Strainer Screen                                 |
| 17    | Bottom Plug                                     |
| 17A   | Bottom Cover (for 1 1/2" & 2" sizes only)       |
| 18    | Bottom Cover Bolts & Nuts (6)(1 1/2" & 2" only) |
| 19*   | Bottom Cover Gasket (1 1/2" & 2" only)          |

\* Recommended spare parts.