

SCADA Web

Remote HMI Viewing & Control Software

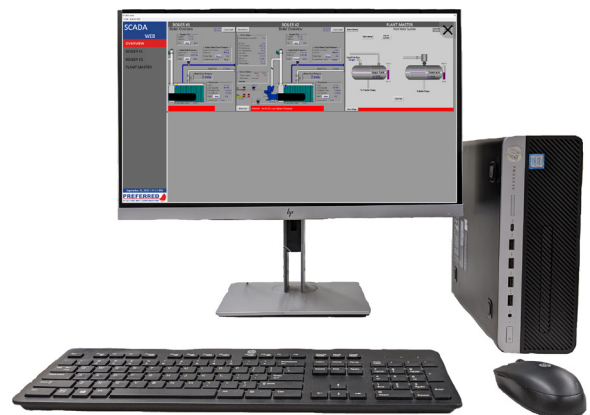
The screenshot displays the SCADA Web interface with a sidebar on the left containing navigation options: SCADA WEB, OVERVIEW, PLANT MASTER, BOILER #1, BOILER #2, and BOILER #3. The main content area is divided into four panels:

- PLANT MASTER Flow Totals:** A table showing current and totalized flow rates for various streams.
- BOILER #1 Boiler Overview:** A detailed view of a boiler with a schematic diagram and various control parameters like FSG Status, Oxygen Trim, and Steam Pressure.
- BOILER #2 Flame Safeguard Current Status:** A status panel for a boiler's flame safeguard system, showing start limit, high press, and flame sensor status.
- BOILER #3 Economizer Overview:** A schematic diagram of an economizer with associated temperature and pressure data.

At the bottom of the interface, there is a date and time stamp: "March 27, 2019 12:27:30 PM" and the Preferred Utilities Mfg Corporation logo.

The Preferred Utilities SCADA/Web Software allows for remote monitoring & control of local web-enabled Operator Interface Touchscreens (OIT)s from the convenience of a standard web browser. SCADA/Web allows operators or supervisors to quickly gain an operational overview of your facility from a single location. The software interface is streamed directly from the local OIT screens allowing for a consistent

and familiar user experience across locations and reduced training time. With SCADA/Web facilities can securely implement simple centralized monitoring solutions without the added complexity and overhead introduced with traditional SCADA systems.



SCADA Web

Remote HMI Viewing & Control Software

Convenience

SCADA/Web systems allow a single operator to view many local HMI systems from a single overview screen in real time. From the overview screen operators can drill down to a specific HMI to navigate screens or change control parameters. SCADA/Web systems can be accessed from any local computer with a standard web browser. For dedicated workstations special client software is provided to automatically launch the SCADA/Web application on startup and prevent other windows from obscuring the SCADA interface.

Simplicity

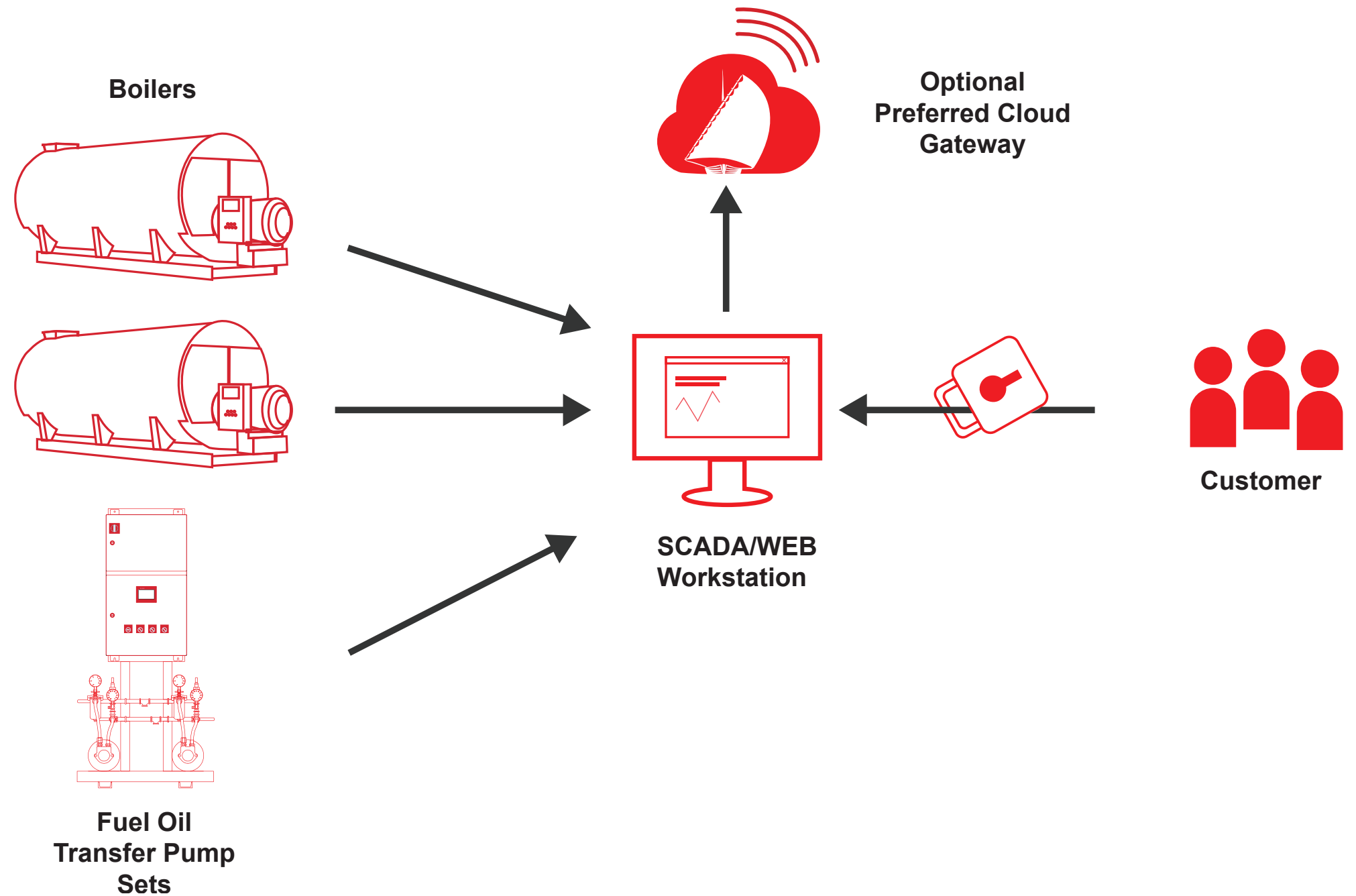
OIT screens are streamed directly to the SCADA/Web interface. This allows for all operator stations to observe the exact same screen state at different locations. The consistency of SCADA and OIT screen allows operator training to be streamlined to a single workflow which is applicable across workstations. Only relevant Alarm Logs and Trending Data is stored at each local HMI to prevent the confusion introduced from multiple data sources.

Security

SCADA/Web applications can be configured to only communicate over secure communications protocols to mitigate threats introduced with traditional industrial protocols such as Modbus, BACnet, & OPC. HTTPS certification authentication is available either with customer signed certificates or PUMC signed certificates.

Addons

Remote Alarm & Event Phone Calls, Texts, & Emails are available with a Preferred Cloud ReAct Subscription. Preferred Cloud ReAct subscriptions can be expanded to include Preferred ContAct a cloud-based dashboard to securely access your equipment from anywhere in the world. SCADA/Web software pairs extremely well with large format touch screen displays available in sizes up to 42"



Monitoring Systems

Comparison Chart

X: Available
O: Optional
-: Not Available/Not Applicable

Features	SCADA/Web	SCADA/Flex	Preferred Cloud ReAct	ContAct Add-On	ProAct Add-On
Real Time Equipment Status Dashboard	X	X	-	X	-
On-Screen Alarm & Event Notifications	X	X	-	X	-
Remote Equipment Control	X	X	-	-	-
Custom, Customer Specific Design	-	X	O	O	X
Custom Equipment Integration	-	X	X	O	X
Maximum Number of Users	4	250	Unlimited	Unlimited	Unlimited
User Based Access Controls	-	X	X	X	X
Call/Text/ Email Alarm & Event Notifications	-	O	X	-	-
Central Alarm & Event Log	-	X	X	-	-
Central Historical Datastore	-	X	-	X	X
Consumption Reports	-	X	-	O	X
Outage Reports	-	X	-	O	X
Boiler Efficiency Monitoring	X	X	X	X	X
Energy Efficiency Analysis	-	-	-	-	X
Inefficiency Diagnosis	-	-	-	-	X
Location	On-Prem	On-Prem	On-Prem/Cloud	On-Prem/Cloud	On-Prem/Cloud
Licensing	Request Quote	Request Quote	\$79.99/Month/Facility	\$19.99/Month/Facility	Request Quote

Notes:

1. Data collection & storage is dependent on cloud gateway network access
2. ProAct Analytics are high dependant on accurate instrumentation and metering. Engineering may determine that existing instrumentation may be inadequate.