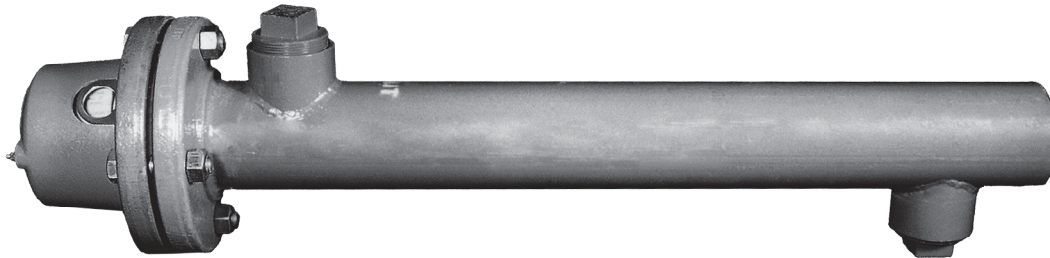


ELECTRIC OIL HEATERS

Model L

Listed as standard by Underwriters' Laboratories, Inc.

Approved by New York City, Board of Standards and Appeals (Cal. No. 554-57 SA)



The Model L Electric Oil Heater is used for preheating fuel oil as it is pumped through the piping system. It is usually installed on the discharge side of oil heaters that use steam or hot water as the heating medium to maintain oil temperatures during standby and cold starting conditions. It is also frequently installed in the oil return line to warm the lighter oils when it is necessary to avoid accumulations of paraffin wax in the piping system. For the latter application, a Preferred Model SB Suction Bell should also be installed in the tank to assure that warm oil will be drawn back into the suction line.

The thermostatically controlled electric immersion heating element is housed in a welded steel manifold suitable for pressures to 150 PSIG. The element is flanged for easy removal during servicing or cleaning. The oil temperature thermostat is adjustable over a range of 100° F to 220° F.

Standard heaters are furnished with wattage ratings based on 208, 230, or 460 VAC. The actual wattage depends upon the exact voltage supplied to the heater.

These heaters are available with three different watt densities. The low watt density series should always be used when the heater is on the suction side of the pump.

Low Watt Density, Series E, have 12 watts per square inch of heating surface.

Medium Watt Density, Series M, have 18 watts per square inch of heating surface.

High Watt Density, Series S, have 24 watts per square inch of heating surface.

A fully enclosed, suitably rated contactor and enclosure with a 120 V/60Hz coil is furnished with each heater.

Ordering Information

When ordering, specify size, watt density series and electrical characteristics. (Example: LS-18 240V/3/60) Consult factory for other voltages.

Suggested Specifications

Electric Oil Heater shall be Preferred Utilities Mfg. Corp., Danbury, CT, Model L_____, designed for operation with _____ volt _____ phase power, rated at _____ KW and having a watt density not more than _____ watts per square inch. Heater shall be controlled by a line voltage thermostat with a range of 100° F to 220° F, that shall be wired in the pilot circuit of a contactor of ample rating for the heater current. Heater shall be U. L. approved and shall have a flanged manifold rated at 150 PSIG with 2" NPT oil connections.

Specifications subject to change without notice.

ELECTRIC OIL HEATERS

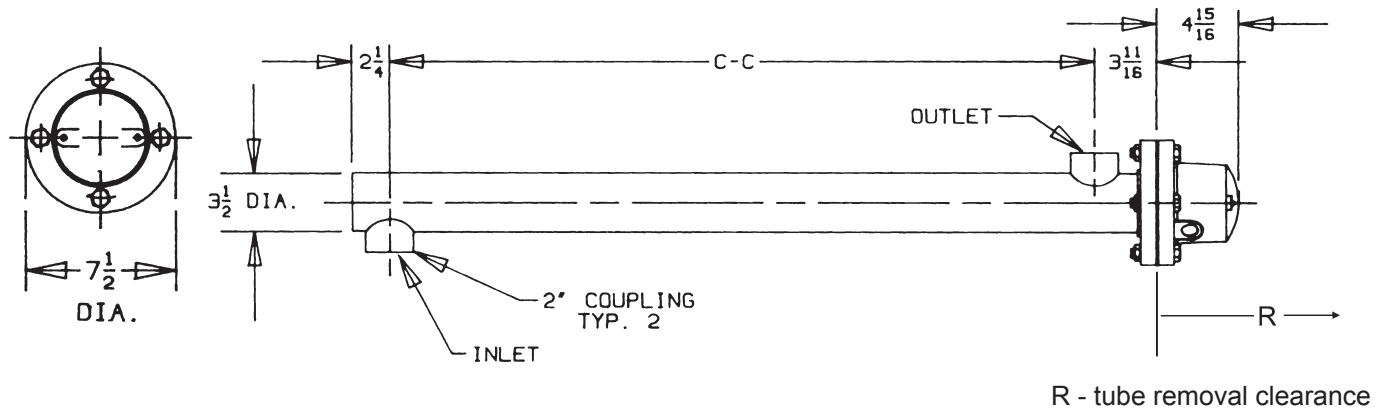
Model L

Capacity & Load Ratings

Gallons per hour for 50° F temperature rise

Catalog Number	230 VAC, 1 phase			208 VAC, 3 phase			230 VAC, 3 phase			460 VAC, 3 phase		
	GPH	A	KW	GPH	A	KW	GPH	A	KW	GPH	A	KW
L6	96	26.1	6	96	16.7	6	96	15.1	6	96	7.5	6
L8	128	34.8	8	128	22.2	8	128	20.1	8	128	10.1	8
L10	160	43.5	10	160	27.8	10	160	25.1	10	160	12.6	10
L12	192	52.2	12	192	33.3	12	192	30.2	12	192	15.1	12
L15	240	65.2	15	240	41.7	15	240	37.7	15	240	18.8	15
L18	288	78.3	18	288	50.0	18	288	45.2	18	288	22.6	18
L24	384	104.3	24	384	66.7	24	384	60.3	24	384	30.2	24
L30				480	83.4	30	480	75.4	30	480	37.7	30
L36				576	100.0	36	576	90.5	36	576	45.2	36

Outputs rated are based on 208, 230, and 460 VAC.



R - tube removal clearance

Catalog Number	Series E 12 W/sq. in.		Series M 18 W/sq. in.		Series S 24 W/sq. in.	
	R	CC	R	CC	R	CC
L6	28	25	19	15	18	13
L8	37	34	25	22	18	13
L10	47	44	31	28	24	19
L12	55	52	38	35	30	25
L15	69	66	46	43	36	31
L18	83	80	56	53	40	36
L24	111	108	75	72	54	50
L30	123	120	93	90	66	32
L36	---	---	111	108	78	74

Dimensions in Inches